

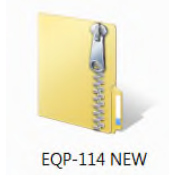


EQP-114 PC LINK GUIDE

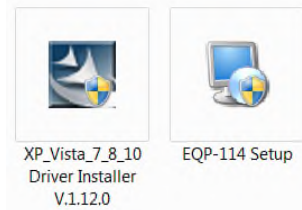
The EQP-114 is designed to connect to a PC for saving Test Result data or print (A4 size), or send as an email attachment.

1) Download the EQP-114 Software and Driver from the download page (EQP-114 New) “download” tab.
<http://www.plusquip.com.au/products/test/eqp-114-battery-electrical-system-tester-printer/>

2) Unzip / extract the “EQP-114 New” Software and Driver file.



In this folder you will find the following files:



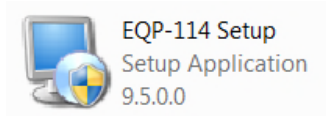
Important Note:

Before you install the driver do not plug the EQP-114 into the computer’s USB port. The installation may fail and the computer cannot detect the correct driver for the EQP-114 when connected.

3) Install “XP_Vista_7_8 Driver Installer V.1.12.0” first. Double click the icon and the installation will start automatically.



4) Install the EQP-114 PC Link Setup Software. Double click the “EQP-114 Setup.exe” to start the installation.

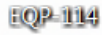


5) Click the “Install” tab to continue the installation and the software will start.



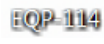
Once the display shows the installation is complete click “Finish” tab to exit.



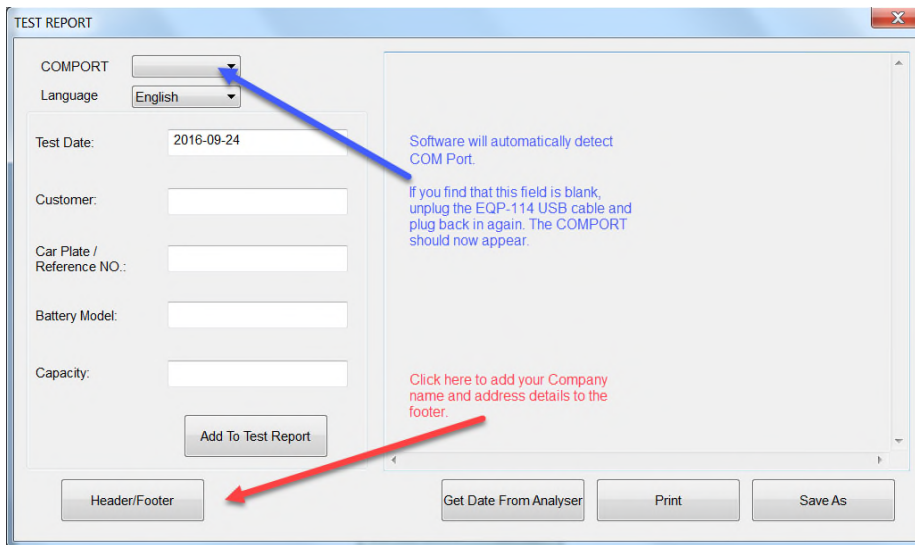
6) The icon  will appear on your desktop



7) The EQP-114 can be plugged into any one of the PC USB ports.



8) Left click on the  icon to open the program.




9) The TEST REPORT display page will now show as below.



10) On the EQP-114 Main Menu as shown below, select Stored Results by pressing  key to highlight and then press  key to select/enter.



The details / information that you had entered prior to the test will display.

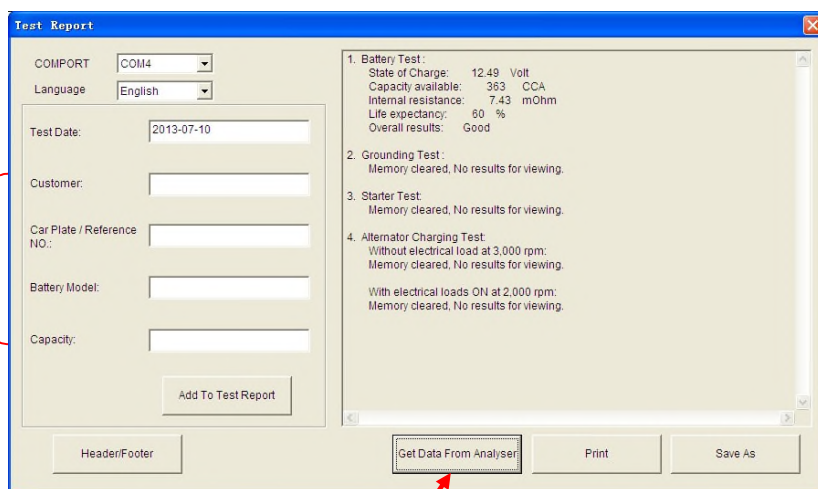
Select by scrolling  or  key and then press  key. The display will change.







While on this display click on [Get Data from Analyser] tab on the PC and the Test Result will appear.

You can type in the particulars here and then click [Add to Test Report] tab to be included in the test report which will be stored and printed out if you wish.



To view another test result, press  key to go back to the display.

Select the next test Result and press  key, and the display will go to the particulars screen. Now press  key again will display the results.

ON the PC, click "Get Data from Analyser" tab and the results will be transferred to the PC.

If there is no communication, a message text box will appear (see below)



In this case, unplug the Analyzer from the PC and repeat Step 7 to Step 10. If problem persist, then select an alternate COMPORT individually from the dropdown list and click [Get Data From Analyser] tab to see whether the Last Test Result will appear.

-END-