



EQP-104 OBD11 BLACK BOX RECORDER



QUICK START GUIDE

EQP-104 Quick Start Guide V2.00

The Quick Start Guide is designed to make sure that no critical steps are overlooked when you use the product for the first time.

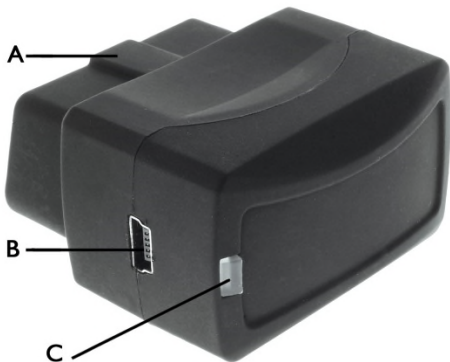
Refer to the EQP-104 User Manual (available from www.plusquip.com.au downloads), and the software's online help for additional information about the use of this software.

Check Kit Components

The EQP-104 contains the following items. Please check each component provided in the kit.

- EQP-104 Data Logger
- USB Cable
- EQP-104 Quick Start Guide

About EQP-104



- A. OBD II Connector** - provides communication with vehicle DLC.
- B. USB Port** – provides a USB connection for PC or laptop.
- C. LED Indicator** - indicates communication status of EQP-104 and vehicle.

Install Data Management Software

√ To be able to use the software, PC or laptop must meet the following minimum requirements:

- Operation System: Win2000, Win XP and VISTA
- CPU: Intel PIII or better
- RAM: 64MB or better
- Hard Disk Space: 30MB or better
- Display: 800*600 pixel, 16 byte true color display or better
- Internet Explorer 4.0 or newer

To install the data management software:



1. Visit the web site www.plusquip.com.au and go to the download section to download Data Management software



2. Double click the icon and follow instructions on computer screen to install the software.



3. Double click the desktop icon to launch the software.
4. Plug the smaller connector into EQP-104's USB port.
5. Insert the USB connector to one of the computer's USB ports.

Install EQP-104 in a Vehicle

To install EQP-104 in a vehicle:



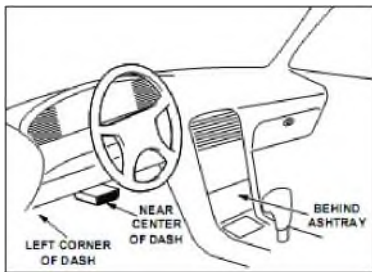
1. Locate the Data Link Connector (DLC) on vehicle.
2. Plug in EQP-104 to the DLC.
3. Drive your car normally.

Data Link Connector

The Data Link Connector (DLC) is a standard 16-pin interface located under the dashboard on the driver's side of the passenger compartment. If the DLC is not located under the dashboard as stated, a decal describing its location should be attached to the dashboard in the area the DLC should have been located.

NOTE On some Asian and European vehicles the DLC is located behind the "ashtray", which must be removed to access it, or on the far left corner of the dash. If the DLC cannot be found, consult the

vehicle's service manual for the location.



Update EQP-104

EQP-104 is able to be updated to keep you stay current with the latest development of technology.

√ To update the code reader, you need following tools:

- EQP-104 Vehicle Monitor
- EQP-104 data management software
- PC or laptop with USB ports and internet explorer
- USB cable

IMPORTANT Do not disconnect the code reader from computer, or power off the computer during the process of updating.

To update the device:




Visit the web site www.plusquip.com.au and go to the download section to see if a software version update is available for your device

If the version shown on the download page is a later version than you have installed then download and install the data management software.

√ Refer to **Install Software and Connect EQP-104 to Computer** on page 3/4 for details of software installation.



1. Click the **Update** icon.

2. Use  to locate update file and start updating

Set Device Clock



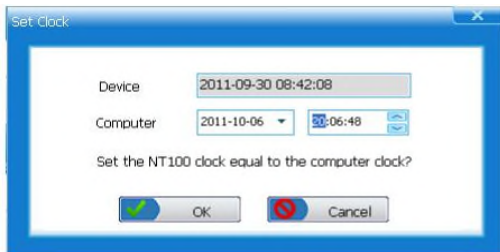
Set Device Clock is used to synchronize EQP-104's internal clock with your computer.



IMPORTANT EQP-104 collects real time vehicle data. To get correct data, make sure to set the device clock match with your computer time.

To set the internal clock:



1. Click the **Set Device Clock** icon from **Setup** screen.



2. If the internal clock to set to match the clock on your computer, click the  key; if not, click the  key to quit and retain the original clock settings.

Download Data




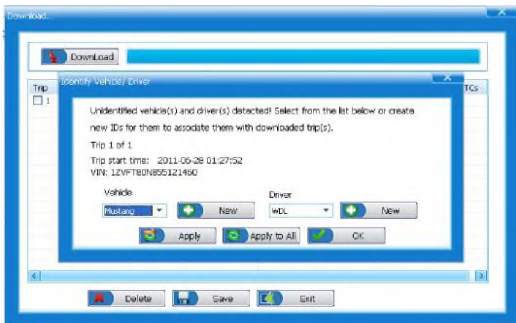
Download is used to download recorded data from EQP-104 vehicle monitor to your computer.

To download data



1. Click the  icon from  screen.

2. Use the  **Download** icon to download data to computer.



3. Select a vehicle and driver from the drop-down lists and use




Apply


associate each trip with vehicle and driver.


√ If all trips are collected from the same vehicle and driver, use



Apply to All

√ If vehicle or driver is not listed, use the  New button to add a new vehicle or driver.

√ Click  OK to exit current screen and view a summary of downloaded trip(s).

4. To delete download trip, select a trip and click  Delete button.

5. If downloaded trip(s) to be saved to database, click  Save; if trip(s) not to be saved, click  Exit to exit without saving.